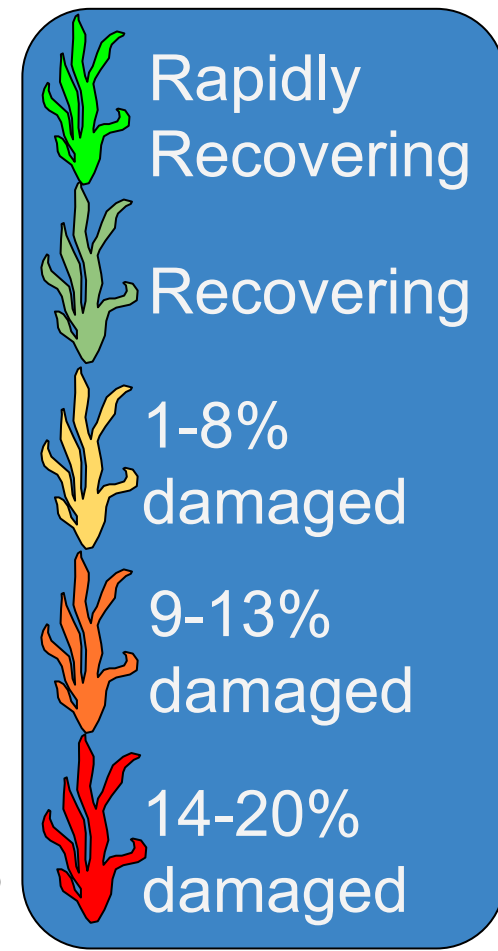
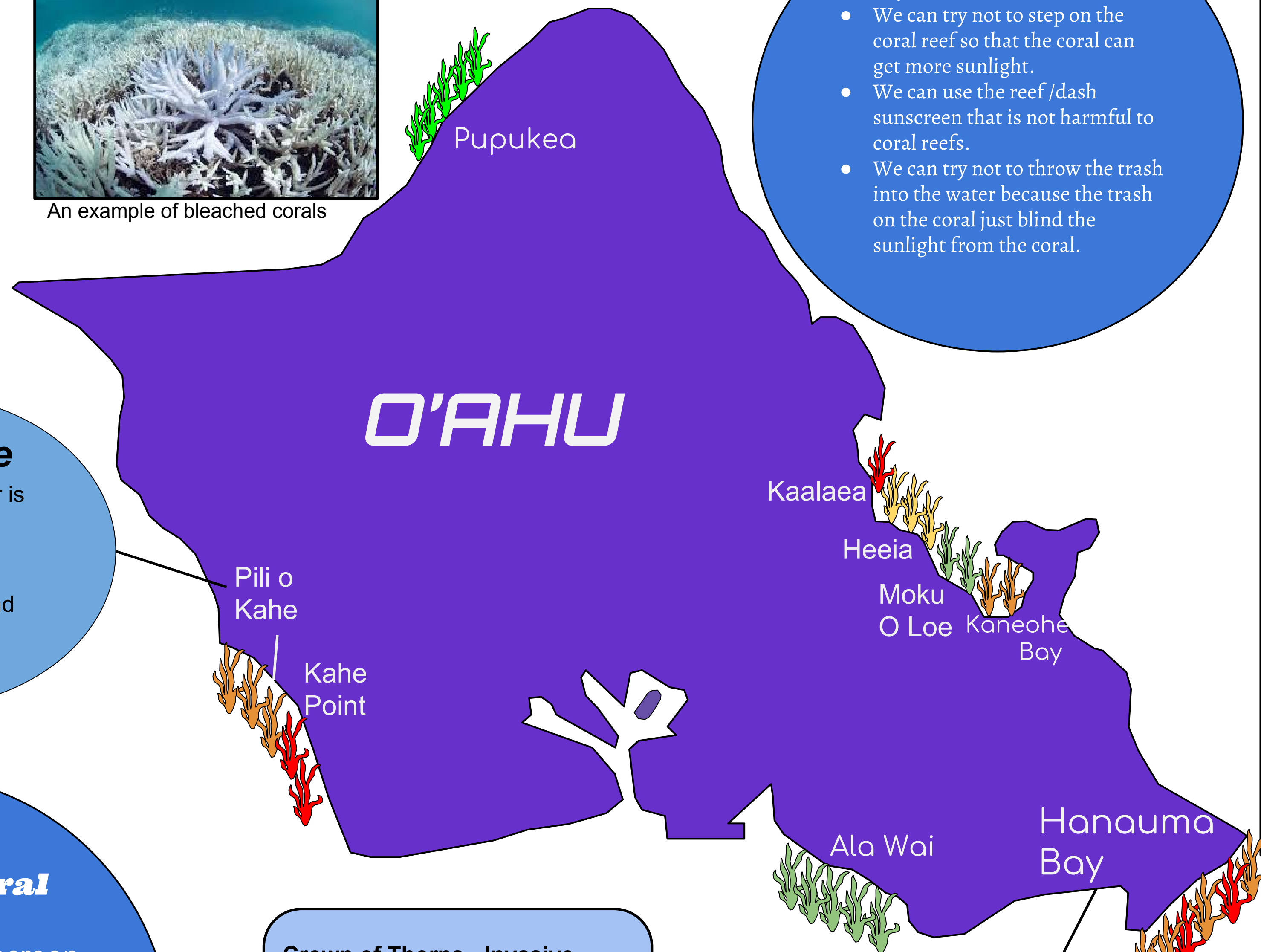


# Polyps in Peril: Damage to Coral of O'ahu

Map by: Huayi Court, Sean Lim, Tyler Paddock, Yeon Joo Choi  
 Works Consulted:  
 Popular Science, "Hawaii's Popular Coral Reefs are in big trouble"  
 Howstuffworks, "What if all the coral reefs disappeared?"  
 NOAA, "From Coral Bleaching to Signs of Recovery"  
 Living Oceans Foundation, "Crown of Thorns, Coral Killers"  
 USA Today, "Two-thirds of Great Barrier Reef Ravaged by Coral Bleaching"  
 Coral Reef Assessment Monitoring Program, "Kahe Point"



An example of bleached corals



## What can you do to protect coral?

- We can try not to step on the coral reef so that the coral can get more sunlight.
- We can use the reef /dash sunscreen that is not harmful to coral reefs.
- We can try not to throw the trash into the water because the trash on the coral just blind the sunlight from the coral.

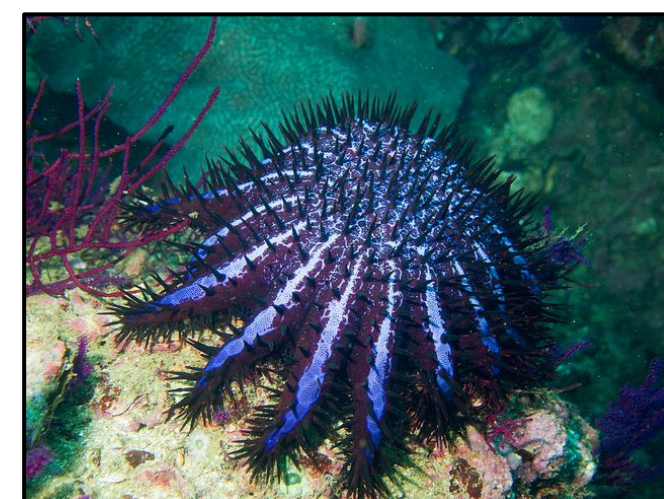
## Pili o Kahe

- Initial coral cover is 40-60%.
- There are high percentages of coralline algae and turf algae at Pili o Kahe.

## Causes of Coral Damage

- Chemicals in sunscreen
- Bleaching from warmer ocean waters
- Stepping on coral
- Silt or trash smothering corals
- Invasive Species

**Crown of Thorns - Invasive**  
 The animal below is called crown of thorns and preys on coral polyps. Because it is invasive species, too many of them are harmful to the coral reefs.



## A Global Coral Bleaching event has

affected our community since **2014**. First, one of the most popular coral reefs in Hawaii, Hanauma Bay, has been in big trouble. 68% of the corals there are bleaching, and 14.5% are already dead. Only 17.4% of the coral of the Hanauma Bay is healthy. Additionally, Kaalaea beach and Kahe point shows negative coral death situation right now (-19.5%, -14%). These problems are also happening in other countries. Climate change as well as disease and invasive species are making **70%** of the coral reef bleached. For example, in just **two years, two thirds** of the Great Barrier Reef near Australia is bleached. The world's largest reef, It is 1400 miles long. This is the same as the distance from Hawaii to America.

## What Will Happen if the Coral disappears?

- Hawaii will lose tens of millions of dollars in tourism revenue.
- Hawaii will lose additional millions on protection from waves and erosion
- The other creatures such as grouper, snapper, oysters and clams, would also be negatively impacted. Because they won't have anywhere to live.
- We won't have medical tools from the coral because the coral produces the medicinal

**Yearly In Hanauma Bay,** 1,095,000 tourists come and many step on the coral, causing damage!

